



ERGOHUMAN

MEJH
OFFICE SEATING



ERGOHUMAN






ERGOHUMAN ADVANCED ENGINEERING

The Ergohuman chair is a perfect fusion of art and science, with flex zones that ensure constant support of back and lumbar, multi-dimensional adjustable arm rests for unparalleled support and a height-adjustable pivoting headrest for full cranial support.

The Ergohuman has been designed specifically for those who are in an office chair for long periods of time and require "Intensive Use Seating" for comfort. Aesthetics, form and function allow this ergonomic chair to utilize a synchro tilt mechanism with 3 positional lock, seat slide, pneumatic height adjustment, automatic lumbar support system, height and angle adjustable arms and headrest all in one very unique ergonomic chair.





Using the ingeniously simple single lever control to operate the three most frequently used chair functions - seat height, seat depth and back tilt can all be operated from a single point of contact.

The Ergohuman® also boasts 97% recyclability, has Greenguard Indoor Air Quality Certification and meets EN 1335-2:2009 and EN 1335-3:2009. Available in a choice of mesh, fabric or leather with polished aluminium frame and base.

FEATURES:

SINGLE LEVER CONTROL

INTENSIVE 8-HOUR DAY COMFORT

AUTOMATIC FLEXIBLE LUMBAR SUPPORT

MULTI-DIMENSIONAL HEIGHT, ANGLE & DEPTH
ARMREST ADJUSTMENTS

PERSONALISED HEADREST CONTROL

SYNCHRO TILT WITH 3 POSITIONAL LOCK

ERGOHUMAN
SMARTDESIGN

ERGOHUMAN SEATING INNOVATION

For a full technical specification, please see page 14-15

HEADREST

To support your neck the headrest can be tilted and height adjusted to suit the user's individual requirements

BACK HEIGHT

Raise or lower the chair's back to support the lumbar (lower back) region of your spine

SYNCHRO BACK TILT

Adjusts angle of back & base proportionally encouraging body movement – increasing blood circulation, therefore reducing fatigue. Additional lock allows you to relax back in one of three positions

SEAT HEIGHT

Raise or lower the seat height on the chair so feet rest flat on the floor allowing the chair to fit individuals of different heights.

SEAT SLIDE

This feature allows you to change the depth of the seat to accommodate the length of the user's legs

POLISHED BASE

Polished aluminium five-star base with 60mm nylon castors

AUTOMATIC LUMBAR SUPPORT

Ergohuman's split back lumbar for adjustable comfort



ARMRESTS

Raise, lower, angle and depth adjustments to allow forearms to rest comfortably whilst taking the weight off your shoulders

SINGLE LEVER MECHANISM

Ingeniously simple single lever control to operate the seat height, seat depth and back tilt functions

TENSION CONTROL

Adjusts back tension to allow the back to tilt comfortably supporting your body weight when reclining

ERGOHUMAN MODELS & OPTIONS

Elevate beyond the ordinary with the Ergohuman's stylish, organic curves and incredible comfort. Ergohuman can be personalised to suit any workspace. Go executive with leather; striking with a combination of our bright, modern fabrics; or mix fabrics and mesh for contemporary comfort. This smart and flexible chair allows individual creativity to flow.

For complementary visitor seating, see Mesh Office Seating's Lii visitor chair.

MODEL OPTIONS



WITH HEADREST



WITHOUT HEADREST

UPHOLSTERY OPTIONS



MESH
HEADREST,
BACK & SEAT



LEATHER
HEADREST,
BACK & SEAT



FABRIC
HEADREST,
BACK & SEAT



MESH HEADREST,
& BACK,
LEATHER SEAT



MESH HEADREST,
& BACK,
FABRIC SEAT



MESH
BACK & SEAT



LEATHER
BACK & SEAT



FABRIC
BACK & SEAT



MESH BACK,
LEATHER SEAT



MESH BACK,
FABRIC SEAT

OTHER OPTIONS



LEGREST OPTION
(Notebook stand also available)



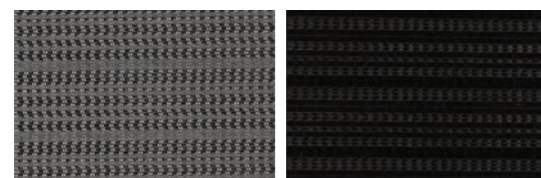
AVAILABLE WITH GLIDES

ERGOHUMAN UPHOLSTERY

Mesh Office Seating are passionate about using mesh on all of our products, however, should you wish to upholster in fabric, we work with all the leading contract fabric suppliers.

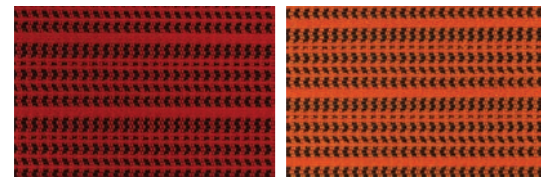
Please note: non stock items will increase lead times.

3D MESH



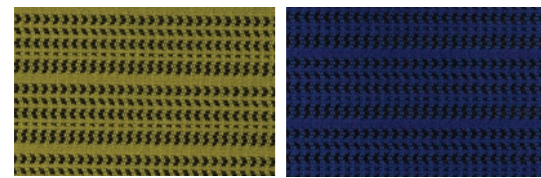
GREY
KMD-30

BLACK
KMD-31



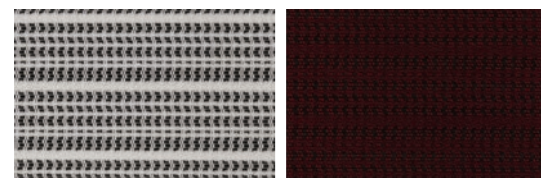
RED
KMD-32

ORANGE
KMD-33



GREEN
KMD-34

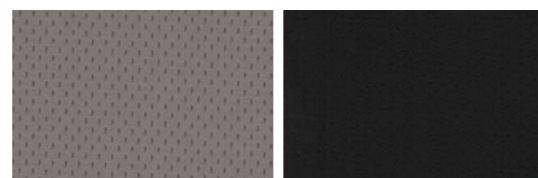
BLUE
KMD-35



WHITE
KMD-36

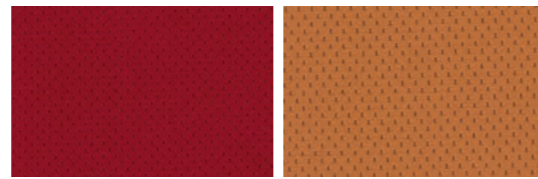
BURGUNDY
KMD-37

FABRIC



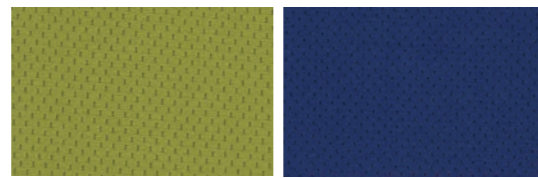
GREY
A24307

BLACK
A24337



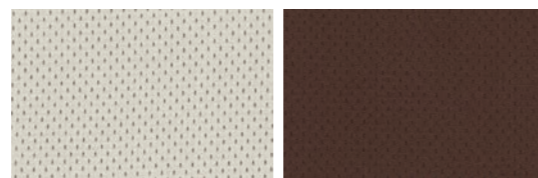
RED
A24305

ORANGE
A24335



GREEN
A24314

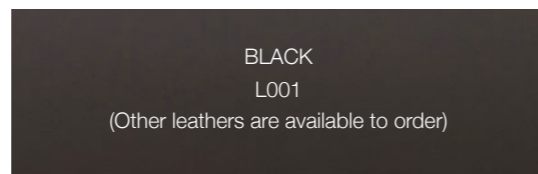
BLUE
A24326



BEIGE
A24301

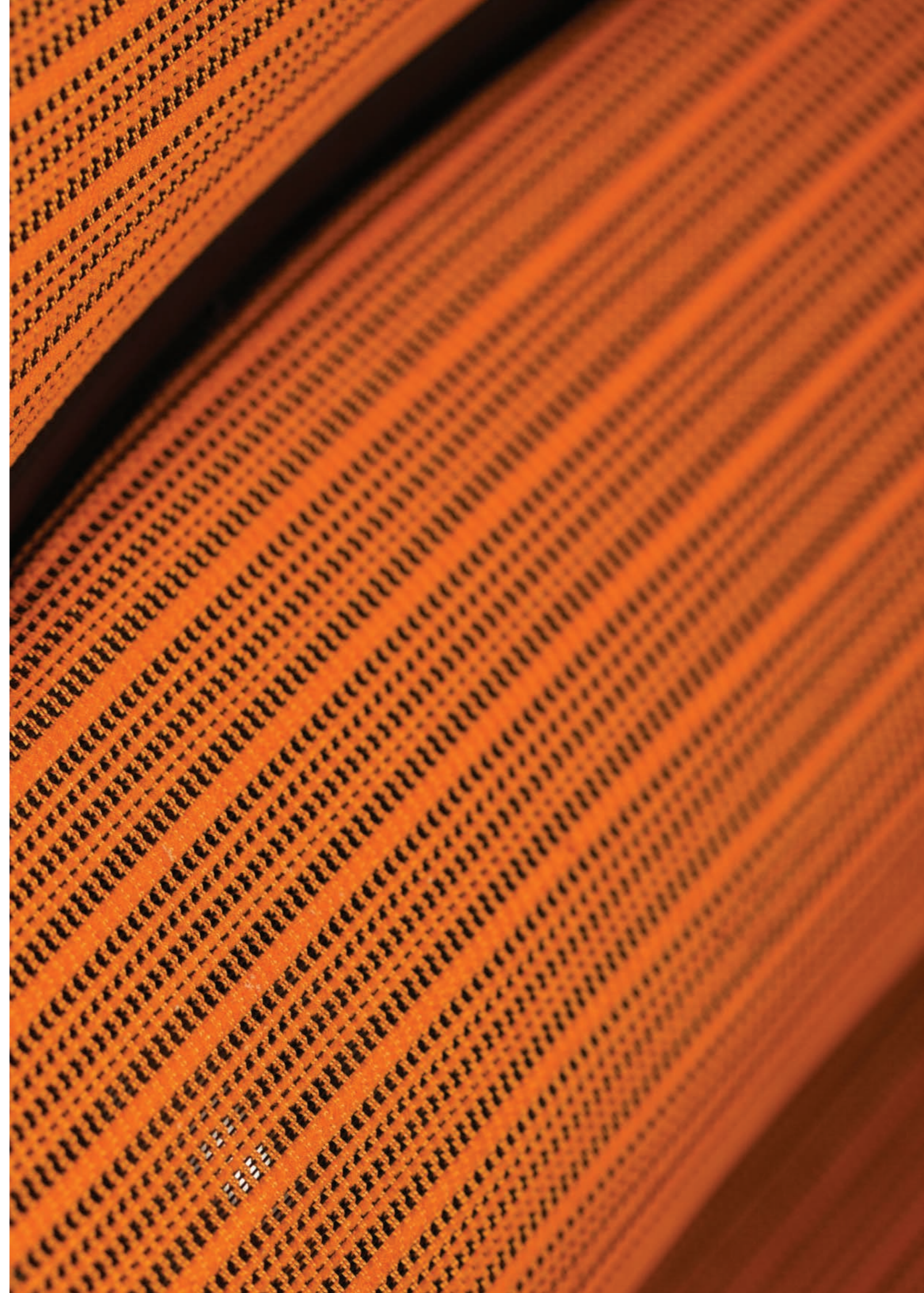
COFFEE
A24393

LEATHER



BLACK
L001
(Other leathers are available to order)

Due to printing limitations, all colours are approximate. Please contact us for actual samples.



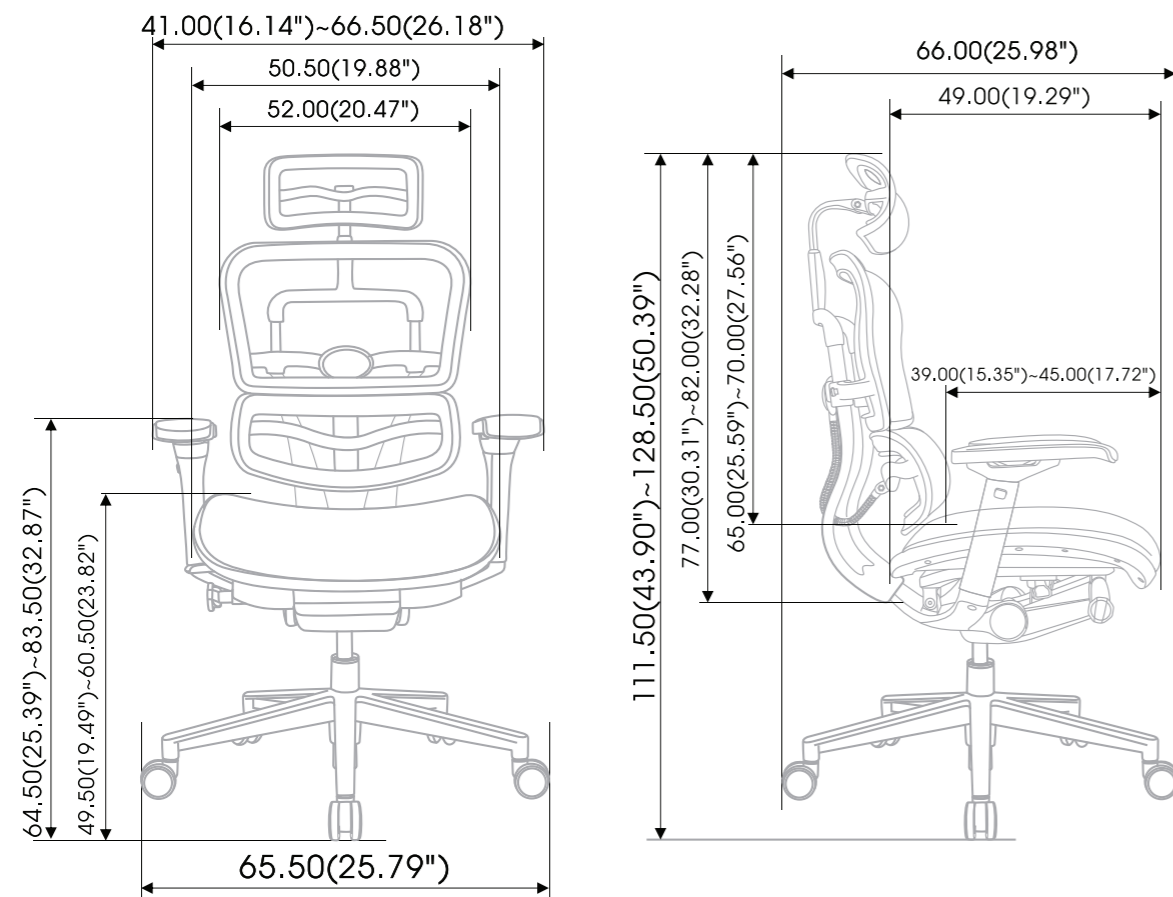
ERGOHUMAN TECHNICAL SPECIFICATION

CERTIFICATION

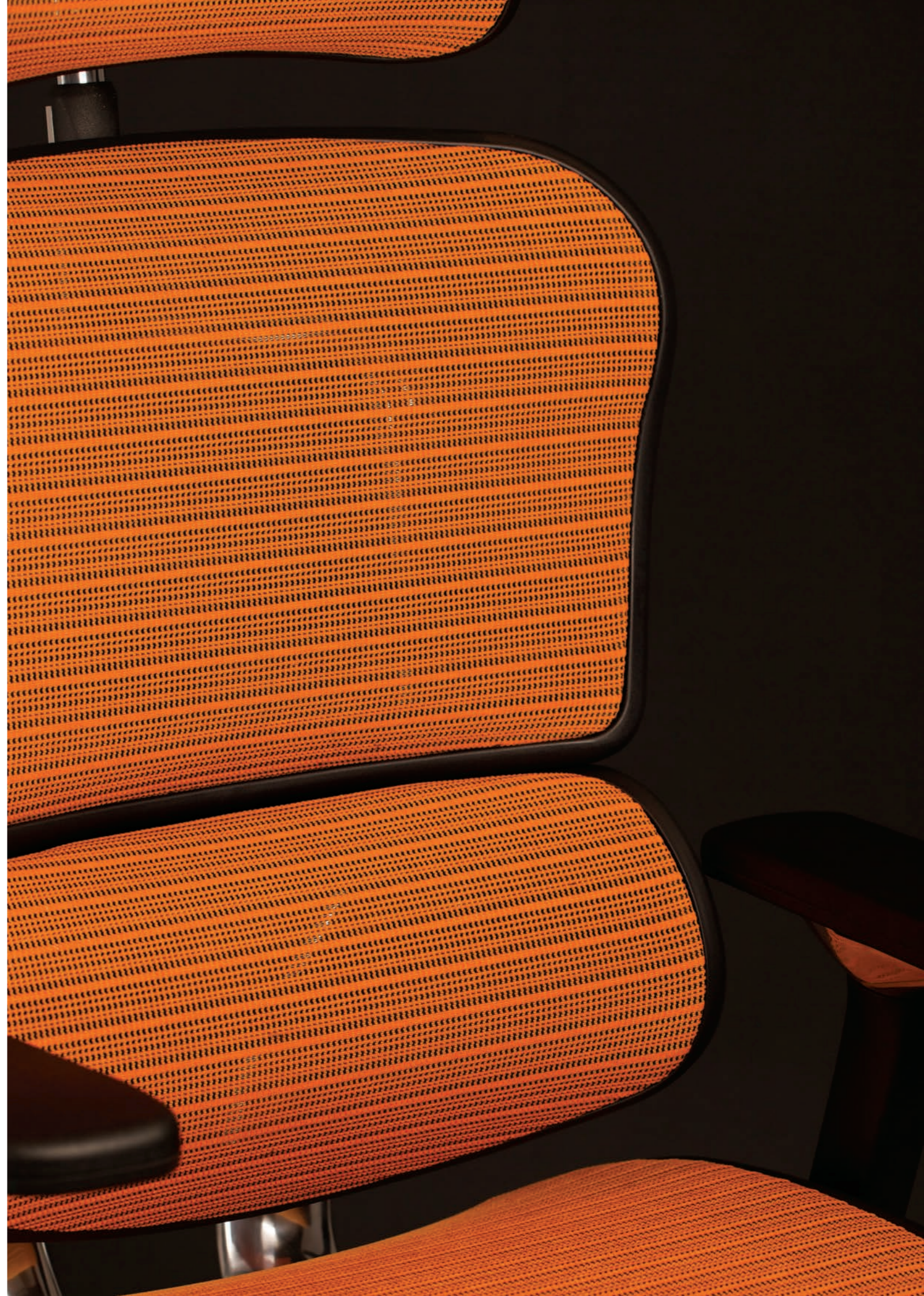
The Ergohuman chair conforms to EN 1335 (2009) Part 2 and EN 1335 (2009) Part 3.

This product has been certified according to the Greenguard Indoor Air Quality (IAQ) Certification Program for Low Emitting Products.

DIMENSIONS



The specifications in this brochure are correct at time of going to print. However, Mesh Office Seating UK Ltd reserve the right to alter any specification without prior notification.



MESH

OFFICE SEATING

Mesh Office Seating (UK) Ltd
Riverbank Mill, 2 Stoneygate Road, Newmilns, Ayrshire, KA16 9BN
T 0845 652 0693 | F 0845 652 0694 | E info@officechairs.co.uk

www.officechairs.co.uk

